

# Shropshire County Age Group Championships 2010

Weekend 1

**27/28 Feb 2010 CC9008**

Saturday

- 1 200m Freestyle Girls 9 & Over
- 2 200m Breaststroke Boys 9 & Over
- 3 100m Backstroke Girls 11 & Over
- 4 100m Butterfly Boys 12 & Over

Warm Up

- 5 200m Ind Medley Girls 9 & Over
- 6 50m Breaststroke Boys 15 & Over
- 7 50m Butterfly Girls 14 & Over

800m Warm Up

- 8 800m Freestyle Boys 12 & Over
9. 800m Freestyle Girls 11 & Over

Sunday

- 10 200m Butterfly Boys 9 & Over
- 11 200m Backstroke Girls 9 & Over
- 12 100m Freestyle Boys 12 & Over
- 13 100m Breaststroke Girls 11 & Over

Lunch Break

Warm Up

- 14 400m Ind Medley Boys 9 & Over
- 15 400m Ind Medley Girls 9 & Over
- 16 50m Freestyle Boys 15 & Over
- 17 50m Backstroke Girls 14 & Over

# Shropshire County Age Group Championships 2010

## Weekend 2

**13/14 Mar 2010 CC9010**

### Saturday

- 18 200m Freestyle Boys 9 & Over
- 19 200m Breaststroke Girls 9 & Over
- 20 100m Backstroke Boys 12 & Over
- 21 100m Butterfly Girls 11 & Over

Break

Warm Up

- 22 200m Ind Medley Boys 9 & Over
- 23 50m Breaststroke Girls 14 & Over
- 24 50m Butterfly Boys 15 & Over

1500m Warm Up

- 25 1500m Freestyle Girls 11 & Over
- 26 1500m Freestyle Boys 12 & Over

### Sunday

- 27 200m Butterfly Girls 9 & Over
- 28 200m Backstroke Boys 9 & Over
- 29 100m Freestyle Girls 11 & Over
- 30 100m Breaststroke Boys 12 & Over

Break

Warm Up

- 31 400m Freestyle Boys 9 & Over
- 32 400m Freestyle Girls 9 & Over
- 33 50m Backstroke Boys 15 & Over
- 34 50m Freestyle Girls 14 & Over

**SHROPSHIRE ASA  
COUNTY CHAMPIONSHIPS 2010 ENTRY FORM**

Affiliated to the West Midland Region  
Under ASA Laws and Technical Rules

Swimmers must be ASA registered to be eligible to compete in the Championships

NAME:	
CLUB: <b>Market Drayton Swimming Club</b>	
Date of Birth	Age Group: 9 – 10 – 11 – 12 – 13 – 14 – 15 – 16 – 17 - Open <b>CIRCLE AGE GROUP</b>
Male – Female <b>DELETE ONE</b>	ASA Registration No:

Insert current best times for events selected in boxes below

Event	Submitted Time	Event	Submitted Time
1500m Freestyle		200m Backstroke	
800m Freestyle		100m Backstroke	
400m Freestyle		50m Backstroke	
200m Freestyle		200m Butterfly	
100m Freestyle		100m Butterfly	
50m Freestyle		50m Butterfly	
200m Breaststroke		400m Ind Medley	
100m Breaststroke		200m Ind Medley	
50m Breaststroke		100m Ind Medley	

<b>Total Events Entered</b>		<b>Entry Fees @ £3.50 per event</b>	
-----------------------------	--	-------------------------------------	--

PLEASE MAKE CHEQUES PAYABLE TO: **Market Drayton Swimming Club**

**Closing date for entries: 31<sup>st</sup> December 2009**

Please give **correctly** filled in entry form and money to: Debbie Grindrod

**REMEMBER**

Entry times must be equal to or better than the qualifying times.

**YOUR AGE IS HOW OLD YOU ARE ON THE LAST DAY OF THE  
COMPETITION : 14<sup>th</sup> March 2010**

Any questions or queries call Debbie Grindrod 01630 658523

**PLEASE PRINT NAMES & SUBMITTED TIMES CLEARLY IN  
BLOCK CAPITALS**

BOYS Shropshire County Age Group Championships Qualifying Times 2010									
EVENT	9	10	11	12	13	14	15	16	17 +
50m Freestyle							30.5	29.6	28.9
100m Freestyle				1:18.1	1:13.2	1:09.1	1:06.1	1:04.0	1:02.6
200m Freestyle	3:30.1	3:12.9	3:01.1	2:50.3	2:39.8	2:30.6	2:24.0	2:19.3	2:16.4
400m Freestyle	7:35.6	6:46.6	6:19.0	5:57.7	5:36.9	5:18.8	5:04.5	4:55.1	4:48.1
800m Freestyle				12:31.0	11:44.5	11:07.4	10:38.6	10:17.9	10:04.1
1500m Freestyle				23:35.6	22:14.5	21:04.5	20:11.2	19:32.0	19:07.4
50m Breaststroke							38.6	37.2	36.4
100m Breaststroke				1:40.1	1:32.8	1:27.3	1:22.9	1:20.0	1:18.2
200m Breaststroke	4:26.6	4:07.6	3:49.7	3:35.9	3:21.1	3:08.8	2:59.9	2:54.4	2:49.5
50m Butterfly							33.2	32.2	31.3
100m Butterfly				1:27.3	1:21.4	1:16.3	1:12.3	1:10.2	1:08.3
200m Butterfly	4:16.3	3:44.7	3:25.1	3:12.7	3:00.0	2:49.0	2:39.1	2:34.9	2:29.8
50m Backstroke							34.7	33.3	32.7
100m Backstroke				1:27.9	1:22.0	1:17.0	1:13.2	1:10.8	1:09.0
200m Backstroke	3:52.3	3:34.1	3:20.0	3:08.4	2:56.3	2:45.8	2:37.8	2:33.0	2:29.8
200m Individual Medley	3:57.5	3:40.0	3:24.5	3:12.7	3:01.2	2:49.7	2:42.0	2:37.0	2:33.3
400m Individual Medley		7:51.9	7:14.2	6:47.4	6:23.3	5:59.8	5:42.4	5:32.6	5:25.0

GIRLS Shropshire County Age Group Championships Qualifying Times 2010									
EVENT	9	10	11	12	13	14	15	16	17
50m Freestyle						34.1	33.2	32.7	32.6
100m Freestyle			1:24.0	1:18.9	1:15.5	1:13.0	1:11.5	1:10.2	1:09.8
200m Freestyle	3:31.4	3:13.5	3:01.2	2:50.0	2:42.4	2:37.4	2:33.7	2:31.2	2:29.5
400m Freestyle	7:39.9	6:50.2	6:17.0	5:54.4	5:39.0	5:28.8	5:21.2	5:17.0	5:13.8
800m Freestyle			12:59.1	12:12.8	11:35.9	11:14.2	11:01.5	10:51.8	10:48.2
1500m Freestyle			25:03.3	23:34.0	22:22.7	21:55.7	21:22.0	20:57.7	20:50.8
50m Breaststroke						42.8	41.7	41.1	40.8
100m Breaststroke			1:46.7	1:40.2	1:34.9	1:30.8	1:29.1	1:28.0	1:26.7
200m Breaststroke	4:28.5	4:07.6	3:49.1	3:34.9	3:23.5	3:16.1	3:12.2	3:09.7	3:07.9
50m Butterfly						37	36	35.4	35.3
100m Butterfly			1:33.7	1:27.4	1:23.4	1:20.1	1:18.6	1:17.4	1:16.4
200m Butterfly	4:18.3	3:47.1	3:26.3	3:11.8	3:02.1	2:55.2	2:50.8	2:48.4	2:46.2
50m Backstroke						38.3	37.6	36.9	36.6
100m Backstroke			1:33.9	1:27.9	1:23.6	1:21.0	1:18.9	1:17.7	1:17.2
200m Backstroke	3:53.6	3:36.0	3:18.9	3:07.2	2:59.1	2:53.2	2:48.7	2:45.9	2:44.0
200m Individual Medley	3:59.3	3:40.3	3:24.3	3:12.0	3:03.7	2:57.4	2:53.5	2:50.9	2:49.2
400m Individual Medley		7:50.7	7:10.5	6:44.0	6:24.9	6:12.1	6:04.2	5:58.0	5:55.5

# SHROPSHIRE COUNTY AGE GROUP CHAMPIONSHIPS

## PROMOTERS RULES AND CONDITIONS

### **1: DATES AND VENUES:**

The dates and venues of the competition shall be decided and approved by the Executive Committee

### **2: ENTRIES:**

Entries for the Competition together with the entry fee must reach the Honorary Gala Coordinator by midnight of the closing date as specified by the Executive Committee.

All entries shall be made on the Official Entry Disk.

The Declaration of Certification of Club entries must be signed by a previously nominated representative of the Club as being correct.

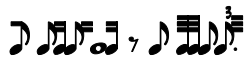
Entry times must be **equal to or faster** than the Qualifying times published for each event.

All submitted entries will be deemed correct and not open to alteration.

The number of entries to the Championships may be limited under the following conditions:

a: there will be **no refund** of entry fees for any entry submitted with a time outside the published qualifying times.

b: the slowest entries within the qualifying times may be rejected at the discretion of the Promoter to comply with designation criteria.



### **3: ENTRY CARDS:**

These Championships will be run on a no entry card system, whereby all swimmers are deemed to be competing and must withdraw from an event by a specified time.

A Schedule of accepted and rejected entries will be sent to each Club.

Withdrawals from events must be made in writing by either the relevant Club coach or nominated representative by the time specified by the promoter, and posted in the box provided for that event. One withdrawal form per event

Decisions on late withdrawals and penalties will be at the discretion of the Promoter.

Failure by a swimmer to withdraw by the specified time will result in the swimmer being excluded from any remaining events they may be entered for.

**There will be no Time Only Swims.**

#### **4: COMPETITORS:**

All competitors must wear costumes which conform to ASA Laws and Technical Rules.

Swimmers are expected to conduct themselves in a correct manner and display a good standard of behaviour both on and off poolside.

#### **5: ELIGIBILITY:**

Competitors must have been a bona fide member of a Club affiliated to Shropshire County ASA for a period of not less than 30 days prior to the first date of competition and be registered in accordance with ASA Laws.

A swimmer who enters or takes part in these Championships must not represent another County or compete in or have competed in another Counties Championships in the same calendar year. Should a swimmer be found to have broken this rule, their recorded times shall be removed from the results and any medals won shall be returned to the promoter.

A swimmer can only swim for one Club in individuals and relays.

#### **6: OFFICIALS:**

All officials will be drawn from the District or WASA lists.

#### **7: EVENTS:**

Entry acceptance is based upon the Qualifying times as published.

All events shall be seeded on submitted entry times and seeded fastest to slowest.

The fastest heat of all Heat Declared events will be arranged on the spearhead principle.

#### **8: PROTESTS AND COMPLAINTS:**

These will only be accepted by the Referee in accordance with ASA Laws and Technical Rules, and, where possible will be dealt with by the Referee or Jury of Appeal, if one is appointed.

#### **9: PROGRAMME OF EVENTS:**

For practical purposes of expediency the Promoter reserves the right to change the order of events in the programme with the concurrence of the Referee and the competitors or their representatives.

#### **10: COUNTY AGE GROUP RECORDS:**

County Age Group Records are times set in the County Age Group Championships only and may be achieved in any of the events in the programme.

Times achieved in official county trials or at any other event will not constitute a County Age Group Record.

**11: MEDALS AND TROPHIES:**

Awards will be made to the first, second and third placed swimmers in each age group of each event.

Certificates will be awarded to all swimmers placed fourth, fifth and six and to all BAGCAT swimmers.

Shropshire Star Trophies will be awarded to the Top 10 year old girl and boy.

The Shropshire Star Record Breaker Trophy will be contested by all swimmers during the Championships and will be presented to the swimmer who breaks the most records. In the event of a tie, the points system will come into effect.

Trophies donated for certain other events will also be presented.

Presentations will be made to the top boy and girl in each age group based on position points. In the event of a tie, the result will be decided by count back of the number of first, second and third places to decide an overall winner.

**12: PROMOTER:**

The Executive committee shall be the Promoter.

For the practical purposes of administration the Honorary Gala Coordinator(s) shall be deemed the Promoter on the day.

Any matter not covered above will be dealt with at the discretion of the Promoter.

**13: AGE ON DAY:**

These Championships will be swum Age on Day which will be deemed to be the last day of the Championships.

**14: FINES & PENALTIES:**

A decision will be made after the results have been checked for swimmers recording times outside the qualifying time for the events entered. **The Club may be fined at the digression of the Shropshire County Executive**

The penalty for a swimmer failing to withdraw by the specified time will be as follows:

**a: the club will pay a £10 penalty**

**b: the swimmer will be excluded from the remaining Championship events.**

**15: WARM UP**

The use of **Training Aids** are not permitted during the **WARM UP**